

Date: 9/24

Review: 5/26

# Rush Green Primary School



## Drug And Alcohol Policy

## Contents

1. Statement of intent	3
2. Key roles and responsibilities	3
3. Definitions	3
4. Training of staff	3
5. Drug education	3
6. Smoking	4
7. Legal Drugs and Prescribed Medicines (Administration of Medication Policy)	4
8. Pupils, staff and visitors found to be under the influence of drugs or alcohol	5
9. Medical emergencies	5
10. Discipline	5

## Rush Green Primary: Drug, Alcohol and Tobacco Policy

### 1. STATEMENT OF INTENT

Rush Green Primary School takes a zero-tolerance approach to the misuse of drugs and alcohol on school premises. This policy has been developed in conjunction with DfE guidance to ensure that everyone is aware of the risks posed by the misuse of drugs and alcohol. We are committed to:

- Upholding the Health and Safety Policy already in place at Rush Green School. Providing a safe and healthy environment which is conducive to the education of the children in the school.
- Providing a robust policy which outlines our zero-tolerance approach to drugs and alcohol misuse.
- Providing clear and consistent protocols and expectations relating to the management and reporting of drugs related incidents on the school site.
- Developing and improving the policy by reviewing it after each event.
- Educating pupils on the dangers of drug and alcohol misuse.

**2. DEFINITIONS** 2.1. Rush Green School defines a “drug” as a substance which, when ingested alters perception and the way the body works. This definition includes but is not limited to: all Illegal Substances, alcohol, tobacco, solvents, medicines and Legal Highs.

2.2 Rush Green defines ‘drug use’ as drug taking, for example consuming alcohol, taking medication or using illegal drugs.

2.3 Rush Green defines ‘drug misuse’ as drug taking which leads a person to experience social, psychological, physical or legal problems related to intoxication or regular excessive consumption and/or dependence. It may be part of a wider spectrum of problematic or harmful behaviour.

### 3. KEY ROLES AND RESPONSIBILITIES

The following people are responsible for any drug related issues within the school:

- |     |                      |                          |
|-----|----------------------|--------------------------|
| 3.1 | Head Teacher:        | Mr S Abeledo             |
| 3.2 | Safeguarding Lead:   | Miss S Thompson          |
| 3.3 | PSHE/Designated Lead | Miss L Griffiths/K Brown |
| 3.4 | Lead Governor:       | Mr D Hodge               |

### 4. TRAINING OF STAFF

4.1. At Rush Green School we recognise that early intervention can prevent drug misuse. As such, teachers will receive training in identifying potentially at-risk pupils.

4.2. Teachers and support staff will receive regular training as part of their development.

## **5. DRUG EDUCATION**

- 5.1. All pupils will receive regular guidance on drugs and alcohol as part of the PSHCE curriculum.
- 5.2. Lessons will be delivered as appropriate to the age and phase of the pupils and will be differentiated according to individual learning styles.
- 5.3. Where appropriate, visitors and outside speakers may join us to lead classes on drug and alcohol misuse.

## **6. SMOKING**

- 6.1. In accordance with Part 1 of the Health Act 2006, Rush Green Primary School is a smoke free environment. This includes all buildings, out-buildings, playgrounds, playing fields and sheltered areas.
- 6.2. Parents/carers, visitors and staff must not smoke on school grounds and should avoid smoking in front of pupils and/or encouraging pupils to smoke.
- 6.3. Pupils are not permitted to bring smoking materials or nicotine products to school. This includes but is not limited to cigarettes, e-cigarettes, lighters, matches or pipes.
- 6.4. In the interest of health and hygiene, we request that people refrain from smoking outside the school gates.

## **7. LEGAL DRUGS AND PRESCRIBED MEDICINES**

- 7.1. We understand that some pupils may require medications that have been prescribed by a doctor.
- 7.2. Parents/carers have the prime responsibility for their child's health and should provide the school with information about their child's medical condition.

- 7.3. Medicines should only be taken to school where it would be detrimental to the child's health if medicines were not administered during the school day.
- 7.4. Rush Green School will only accept medicines which have been prescribed by a doctor, dentist, nurse or pharmacist prescriber.
- 7.5. Medicines must be provided in the original container as dispensed and must include the prescriber's instructions for administration and dosage.
- 7.6. Further guidance can be found in the school Administration of Medication Policy.

## **8. PUPILS, STAFF AND VISITORS FOUND TO BE UNDER THE INFLUENCE OF DRUGS OR ALCOHOL**

- 8.1. Staff members found to be under the influence of drugs or alcohol whilst on school premises will be disciplined in line with their contract of employment.
- 8.2. Visitors to the school found to be under the influence of drugs or alcohol on school premises will be escorted from the premises. The headteacher has the authority to ban persistent offenders from the school.

## **9. MEDICAL EMERGENCIES**

- 9.1. In drug related medical emergencies, one of the trained first aiders will be summoned.
- 9.2. A teacher will remain with the casualty until the trained first aider arrives.
- 9.3. Other pupils will be removed from the immediate area as soon as is reasonably practicable.
- 9.4. Following assessment by the first aider, a decision will be made to ascertain whether an ambulance should be called.
- 9.5. The pupil's parents/carers will be telephoned and advised of the incident.
- 9.6. If the child is felt to be at risk, the Safeguarding Policy will come into effect and social services and/or the police may need to be contacted.

9.7. All accidents and incidents, including near misses or dangerous occurrences, will be reported as soon as possible following the school's health and safety policy.

9.8. Some students may require medicines that have been prescribed for their medical condition during the school day. More detailed information about how we manage medicines on our site can be found in our 'Managing Medicines in Schools' Policy

## **10. DISCIPLINE**

10.1. Teachers and staff members involved in drug and/or alcohol situations on school premises will be disciplined as per their contract of employment and where appropriate the police will be informed.

10.2. Visitors involved in drug and/or alcohol situations on school premises will be banned from entering school premises indefinitely and where appropriate, the police will be informed.

## **11. COMPLIANCE WITH NATIONAL GUIDANCE AND LINKS WITH STATUTORY CURRICULUM REQUIREMENTS**

11.1 Our policy and procedures for managing drug related incidents have been developed in accordance with the departmental advice from the DfE and Association of Chief Police Officers (ACPO): <https://www.gov.uk/government/publications/drugs-advice-for-schools> along with the additional DfE Guidance on Searching, Screening and Confiscation: [https://assets.publishing.service.gov.uk/government/uploads/system/uploads/attachment\\_data/file/1091132/Searching\\_\\_Screening\\_and\\_Confiscation\\_guidance\\_July\\_2022.pdf](https://assets.publishing.service.gov.uk/government/uploads/system/uploads/attachment_data/file/1091132/Searching__Screening_and_Confiscation_guidance_July_2022.pdf)  
As such, we consider all situations individually and recognise a variety of actions that may be necessary to respond to drug related incidents, as recommended by this non-statutory guidance for schools.

11.2 We acknowledge the essential link between managing drug related incidents and our role in providing a broad, balanced and accurate Drug, Alcohol and Tobacco Education (DATE) curriculum for all our students. We achieve this through PSHE (Personal, Social, Health Education), within our Health Education focus on DATE which aims to enable students to take their place safely in a world where a wide range of drugs exists, by making informed choices. In order for them to do so, they need to understand the nature of drugs, their social and legal status, their uses and effects. We further explore attitudes about drugs and provide opportunities for students to develop skills to manage themselves in various situations, whilst recognising their responsibilities for managing their own behaviour. Please refer to our PSHE policy for more detail.

## Procedures for managing drug related incidents

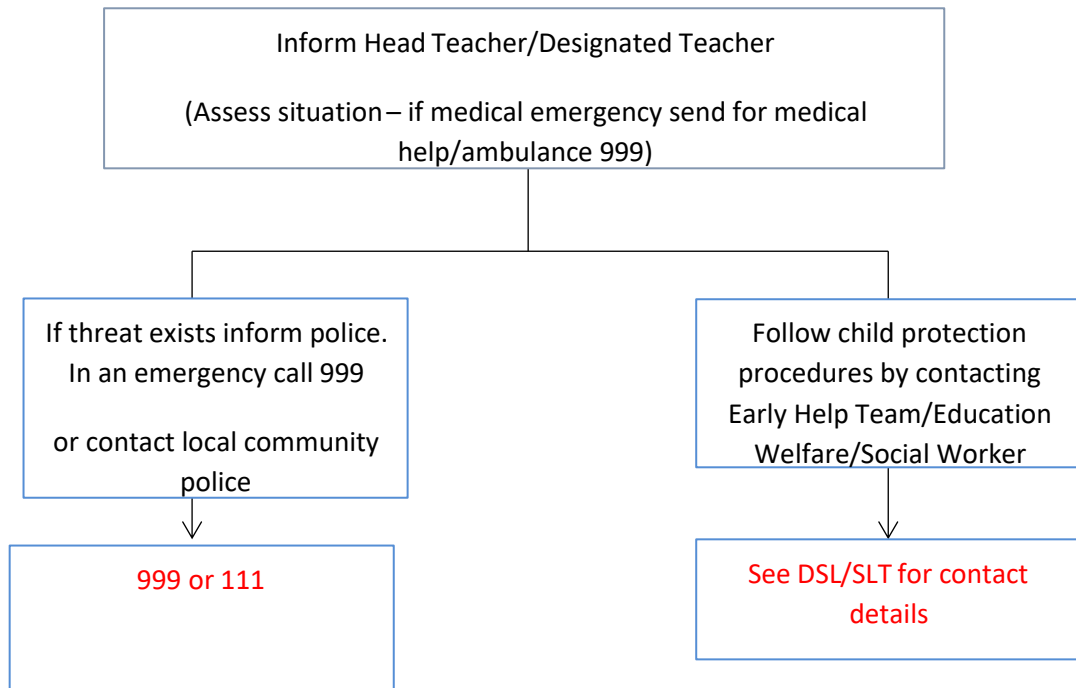
### Appendix 1

#### Procedures for Managing Drugs Related Incidents

This appendix outlines our procedures for managing the following drugs related Incidents, as detailed in each flow chart:

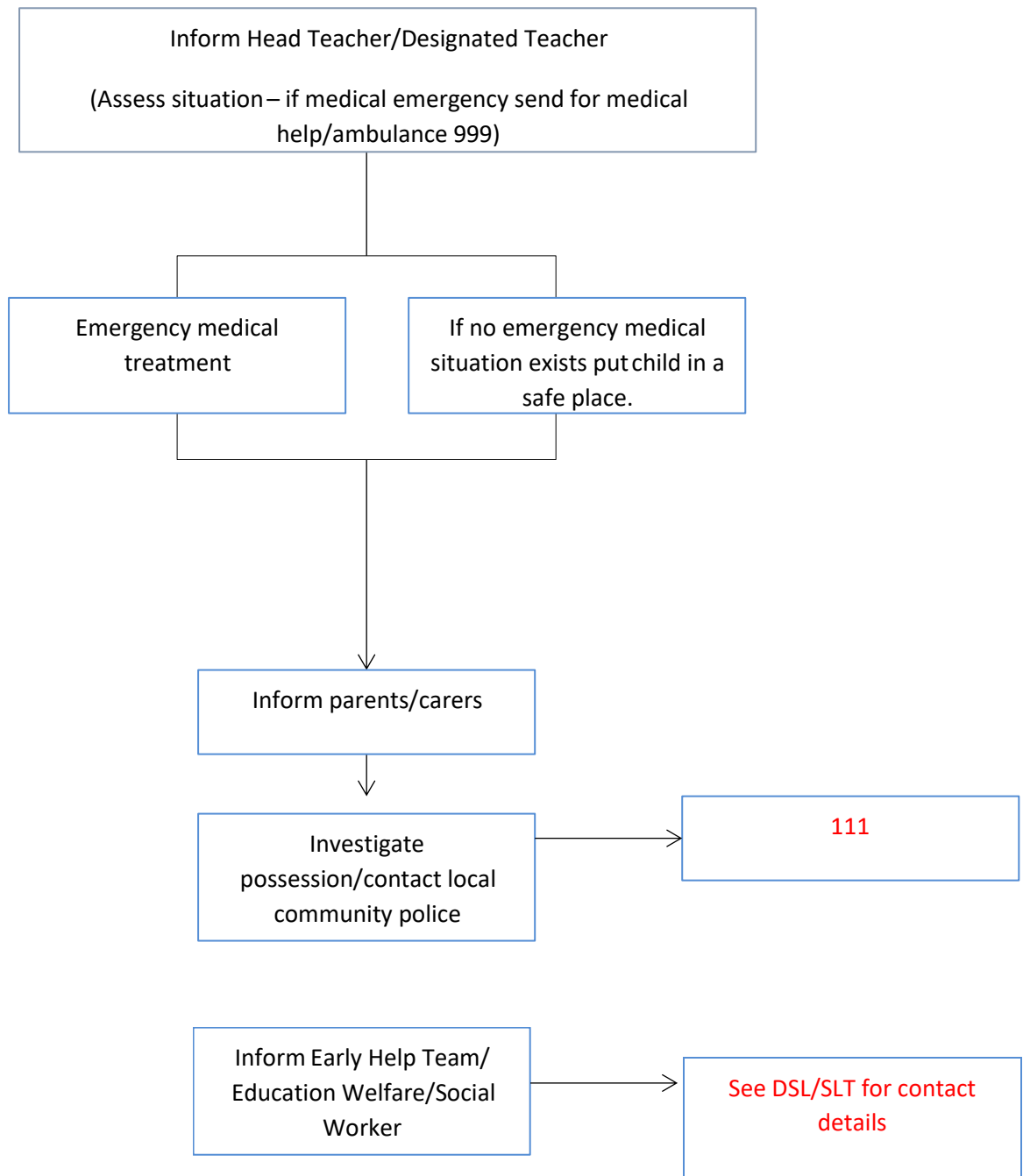
1. Parents/Carers/Others under the influence of drugs/alcohol on school premises
2. Student(s) under the influence of drugs/alcohol on school premises.
3. Students using medicines inappropriately on school premises.
4. Drugs and/or paraphernalia found on students and/or premises (See the searching policy)
5. Student makes disclosure about their own or their parents'/carers'/others' use of drugs/alcohol
6. Supplying (drugs/alcohol/tobacco) by students/parents/carers/others

1. Parents/Carers/Others under the Influence of drugs/alcohol on school premises



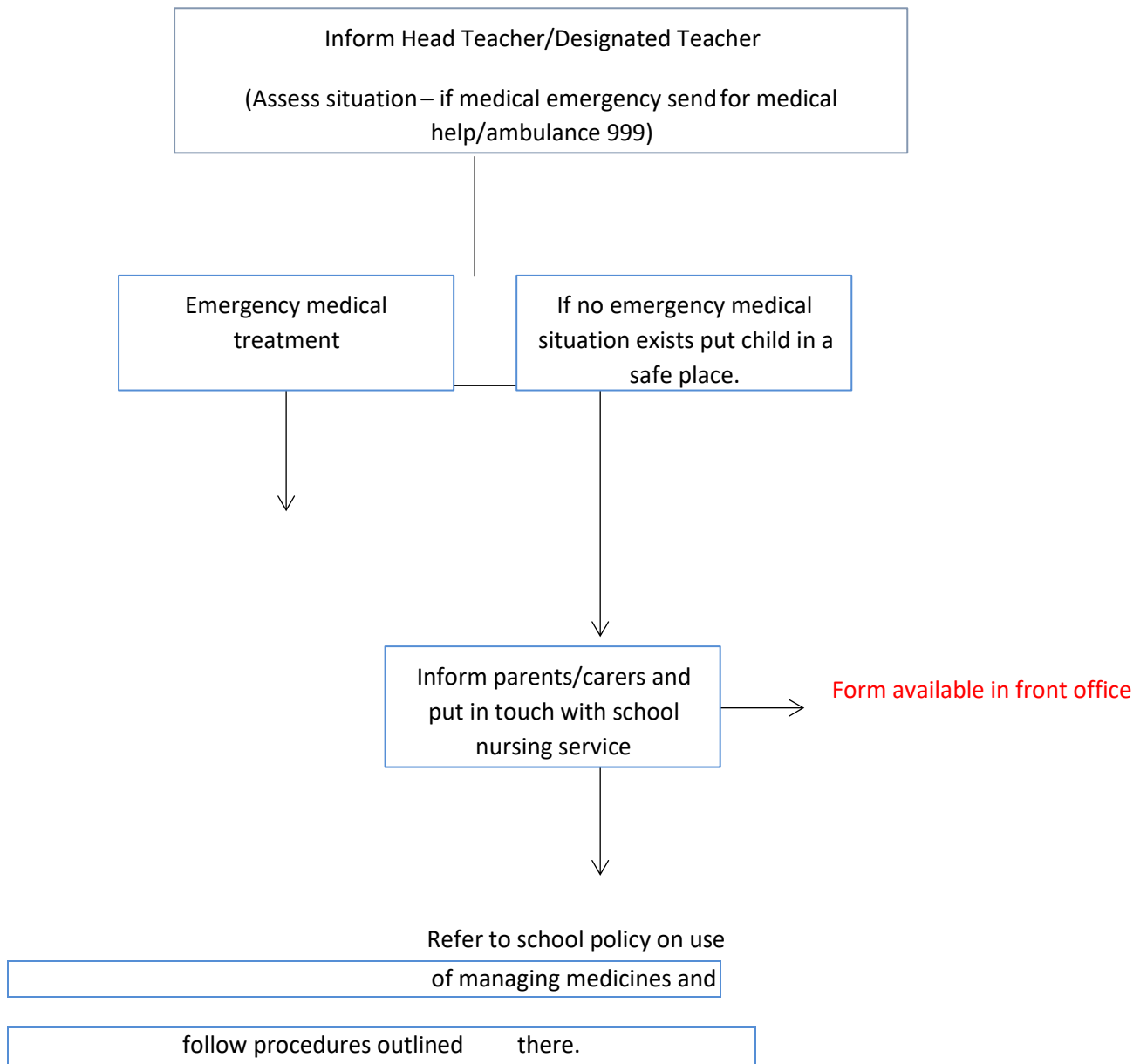
2. Student(s) under the influence of drugs/alcohol on school premises.



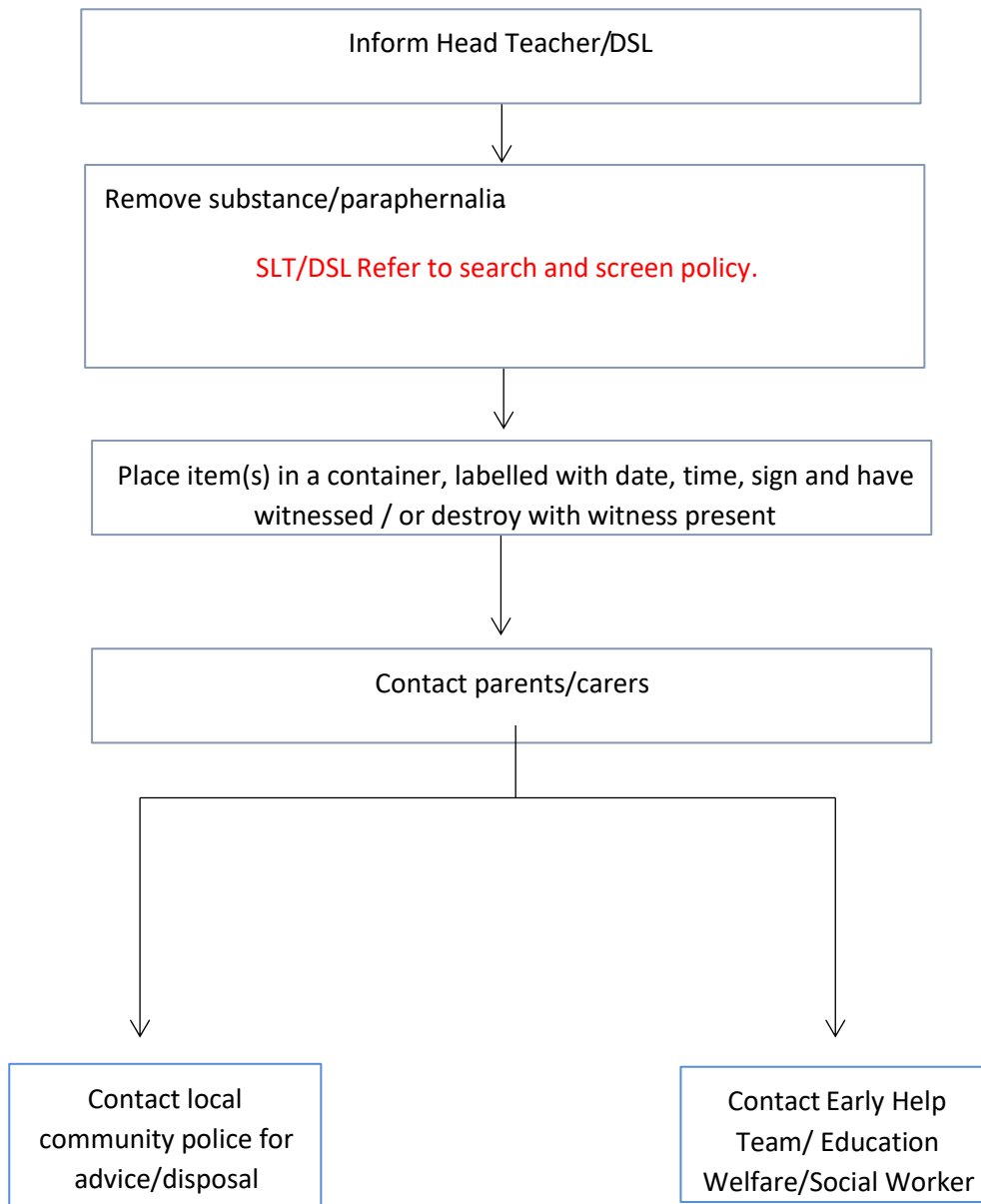


N.B. If tobacco is the drug used you may wish to follow school behavior/discipline policy.

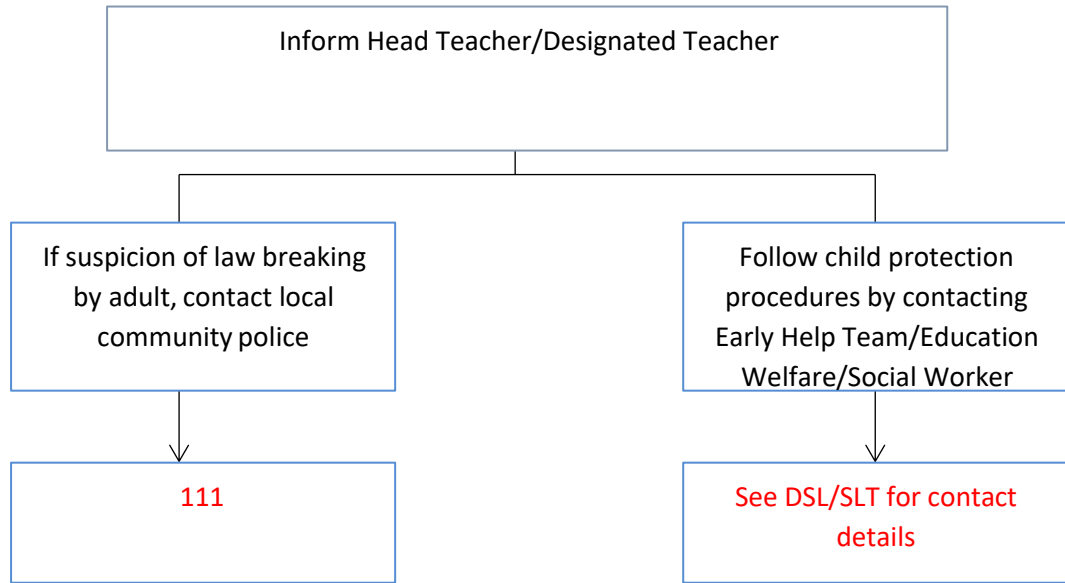
### 3. Students using medicines inappropriately on school premises.



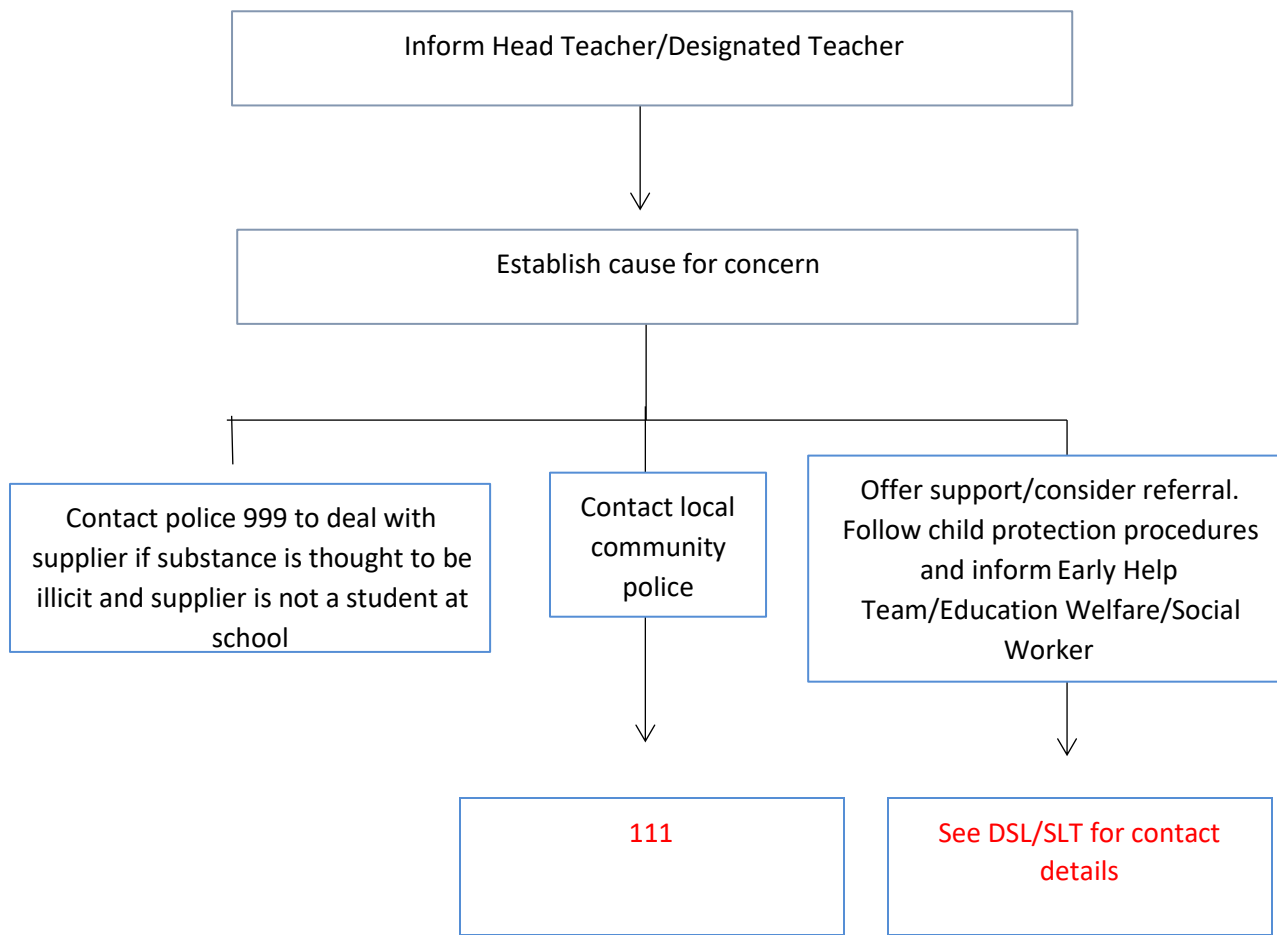
4. Drugs and/or paraphernalia suspected or found on students and/or premises



5. Student makes disclosure about their own or their parents'/carers'/others' use of drugs/alcohol



6. Supplying (drugs/alcohol/tobacco) by students/parents/carers/others



Signed: Head Teacher  
Date: 2024  
Review date: November 2026